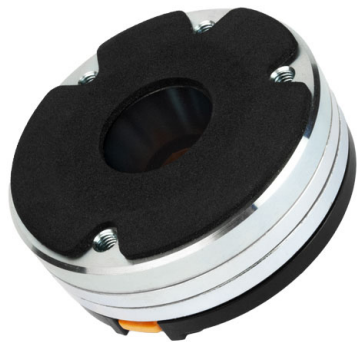


HF110

1" - 40 W - 110 dB - 8 Ohm



NOMINAL SPECIFICATIONS

Throat Diameter	25.4 mm (1 in)
Overall Diameter	72 mm (2.83 in)
180° Mounting Holes Diameter (2xM5)	57 mm (2.24 in)
Depth	35 mm (1.38 in)
Net Weight	520 g (1.1 lb)
Shipping Box (Single carton box)	98 x 90 x 64 mm (3.9 x 3.5 x 2.5 in)
Shipping Weight	570 g (1.3 lb)

PART NUMBER

Faston Terminals - 8 Ohm Version	00374401
----------------------------------	----------

NOTES:

- Driver mounted on a **1" 50° x 40° Horn**
- (1) 2 Hours Test According to AES 2-1984 Rev. 2003
- (2) Maximum power is defined as 3dB greater than nominal power.
- (3) 12 dB/oct or higher slope high-pass filter
- (4) Averaged within the frequency range
- (5) The phase plug is recessed from the driver's exit which is at the end of a conical adaptation horn.

TECHNICAL PARAMETERS

Nominal Impedance	8 Ohm
Minimum Impedance	7 Ohm
AES Power Handling (1)	40 W
Maximum Power Handling (2)	80 W
Minimum Crossover Frequency (3)	2 kHz
Sensitivity (1W/1m) (4)	110 dB
Frequency Range	2÷20 kHz
Voice Coil Diameter	37 mm (1.46 in)
Winding Material	Al
Former Material	Kapton
Diaphragm Material	Ketone Polymer
Diaphragm Shape	Dome
Winding Depth	2.3 mm (0.09 in)
Magnetic Gap Depth	2.6 mm (0.10 in)
Flux Density	2.1 T
Magnet	Neodymium Ring
Re	5.5 Ohm
Phase Plug Design	Annular
Exit Angle (5)	34° Conical
NET Air Volume filled by HF Driver	0.115 dm ³ (0.004 ft ³)

