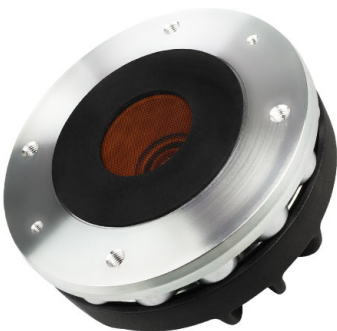


HF146R

1.4" - 80 W - 109 dB - 16 Ohm



NOMINAL SPECIFICATIONS

Throat Diameter	35.6 mm (1.4 in)
Overall Diameter	123 mm (4.84 in)
90° Mounting Holes Diameter (4xM6)	102 mm (4.02 in)
Depth	63.5 mm (2.5 in)
Net Weight	2 kg (4.4 lb)
Shipping Box (Single carton box)	185 x 170 x 122 mm (7.3 x 6.7 x 4.8 in)
Shipping Weight	2.3 kg (5.1 lb)

PART NUMBER

Push Terminals - 16 Ohm Version	00654256
---------------------------------	----------

NOTES:

- (1) 2 Hours Test According to AES 2-1984 Rev. 2003
- (2) Maximum power is defined as 3dB greater than nominal power.
- (3) 12 dB/oct or higher slope high-pass filter
- (4) Averaged within the frequency range
- (5) The phase plug is recessed from the driver's exit which is at the end of a conical adaptation horn.

TECHNICAL PARAMETERS

Nominal Impedance	16 Ohm
Minimum Impedance	15 Ohm
AES Power above 0.9 kHz (1)	80 W
AES Power above 0.65 kHz	40 W
Maximum Power above 0.9 kHz (2)	160 W
Maximum Power above 0.65 kHz	80 W
Minimum Crossover Frequency (3)	0.9 kHz
Sensitivity (1W/1m) (4)	109 dB
Frequency Range	0.7÷18 kHz
Voice Coil Diameter	65 mm (2.56 in)
Winding Material	Al
Former Material	Kapton
Diaphragm Material	Ketone Polymer
Diaphragm Shape	Dome
Winding Depth	3 mm (0.12 in)
Magnetic Gap Depth	4.2 mm (0.17 in)
Flux Density	1.7 T
Magnet	Neodymium Slug Crown
Re	11 Ohm
Phase Plug Design	Annular
Exit Angle (5)	29° Conical
NET Air Volume filled by HF Driver	0.55 dm ³ (0.019 ft ³)

