

# HF110

1" - 40 W - 110 dB - 8 Ohm

## NOMINAL SPECIFICATIONS

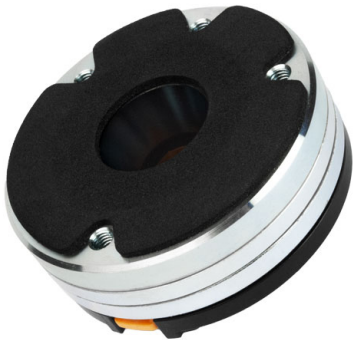
Throat Diameter	25.4 mm (1 in)
Overall Diameter	72 mm (2.83 in)
180° Mounting Holes Diameter (2xM5)	57 mm (2.24 in)
Depth	35 mm (1.38 in)
<b>Net Weight</b>	<b>520 g (1.1 lb)</b>
Shipping Box (Single carton box)	98 x 90 x 64 mm (3.9 x 3.5 x 2.5 in)
Shipping Weight	570 g (1.3 lb)

## PART NUMBER

Faston Terminals - 8 Ohm Version	00374401
----------------------------------	----------

## NOTES:

- Driver mounted on a **1" 50° x 40° Horn**
- (1) 2 Hours Test According to AES 2-1984 Rev. 2003
- (2) Maximum power is defined as 3dB greater than nominal power.
- (3) 12 dB/oct or higher slope high-pass filter
- (4) Averaged within the frequency range
- (5) The phase plug is recessed from the driver's exit which is at the end of a conical adaptation horn.



## TECHNICAL PARAMETERS

Nominal Impedance	8 Ohm
Minimum Impedance	7 Ohm
AES Power Handling (1)	40 W
<b>Maximum Power Handling (2)</b>	<b>80 W</b>
Minimum Crossover Frequency (3)	2 kHz
<b>Sensitivity (1W/1m) (4)</b>	<b>110 dB</b>
Frequency Range	2÷20 kHz
<b>Voice Coil Diameter</b>	<b>37 mm (1.46 in)</b>
<b>Winding Material</b>	<b>Al</b>
Former Material	Kapton
<b>Diaphragm Material</b>	<b>Ketone Polymer</b>
Diaphragm Shape	Dome
Winding Depth	2.3 mm (0.09 in)
Magnetic Gap Depth	2.6 mm (0.10 in)
Flux Density	2.1 T
Magnet	Neodymium Ring
Re	5.5 Ohm
Phase Plug Design	Annular
Exit Angle (5)	34° Conical
NET Air Volume filled by HF Driver	0.115 dm^3 (0.004 ft^3)

